



# ADATA SSD Firmware Update User Guide

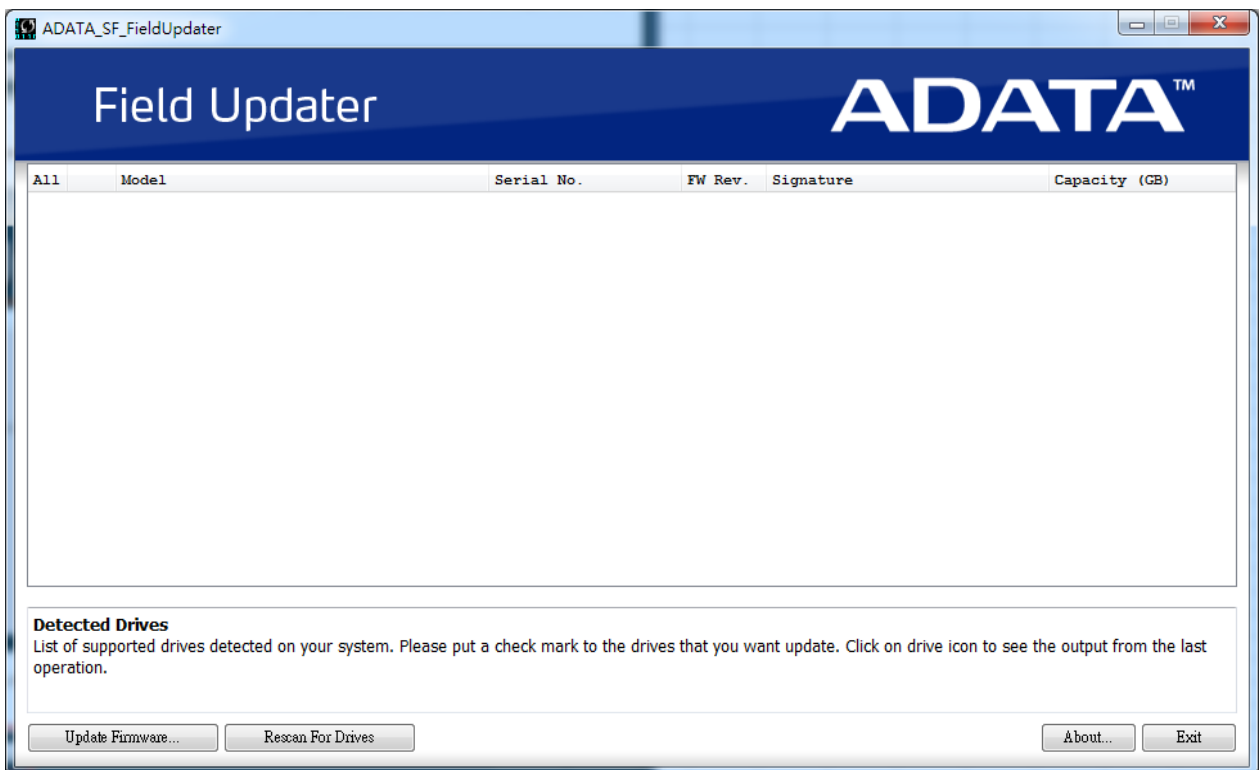
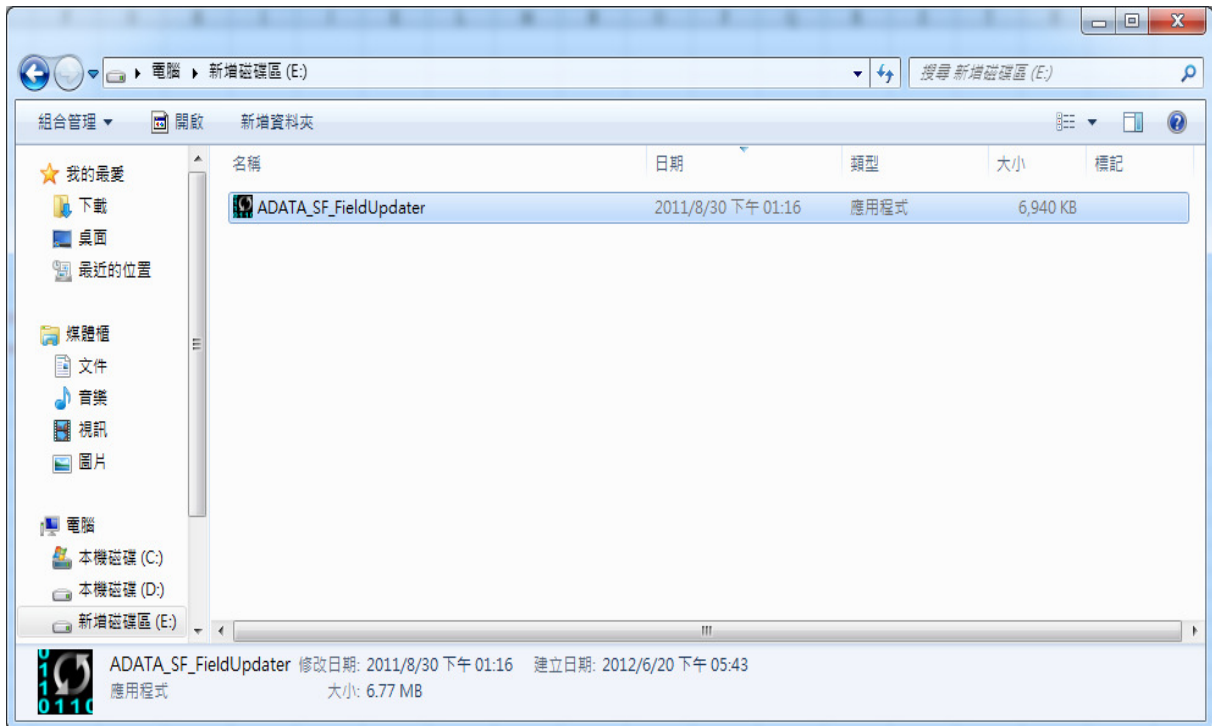


**WARNING:**

- 1) ADATA SSD firmware Field Updater is supported on Windows 7/Vista/XP, Fedora Core 12 64-bit, and Fedora Core 14 32-bit only. It's not supported on Mac OS.
  
- 2) Updating your SSD firmware should not result in data loss. However, ADATA recommends that you back up your data as a precaution before proceeding.
  
- 3) You must have Administrator rights in order to run the Field Updater.

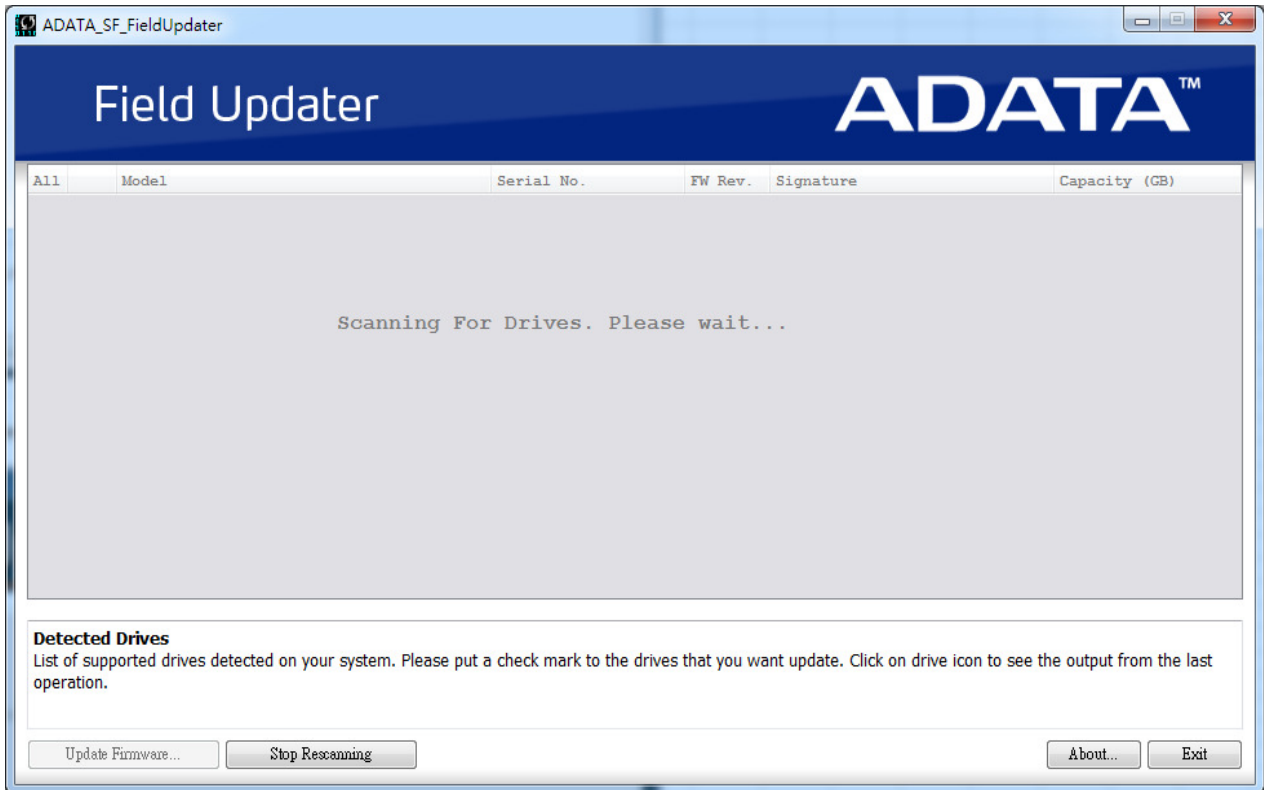


1. Double Click "SF\_FieldUpdater" to start running this program.



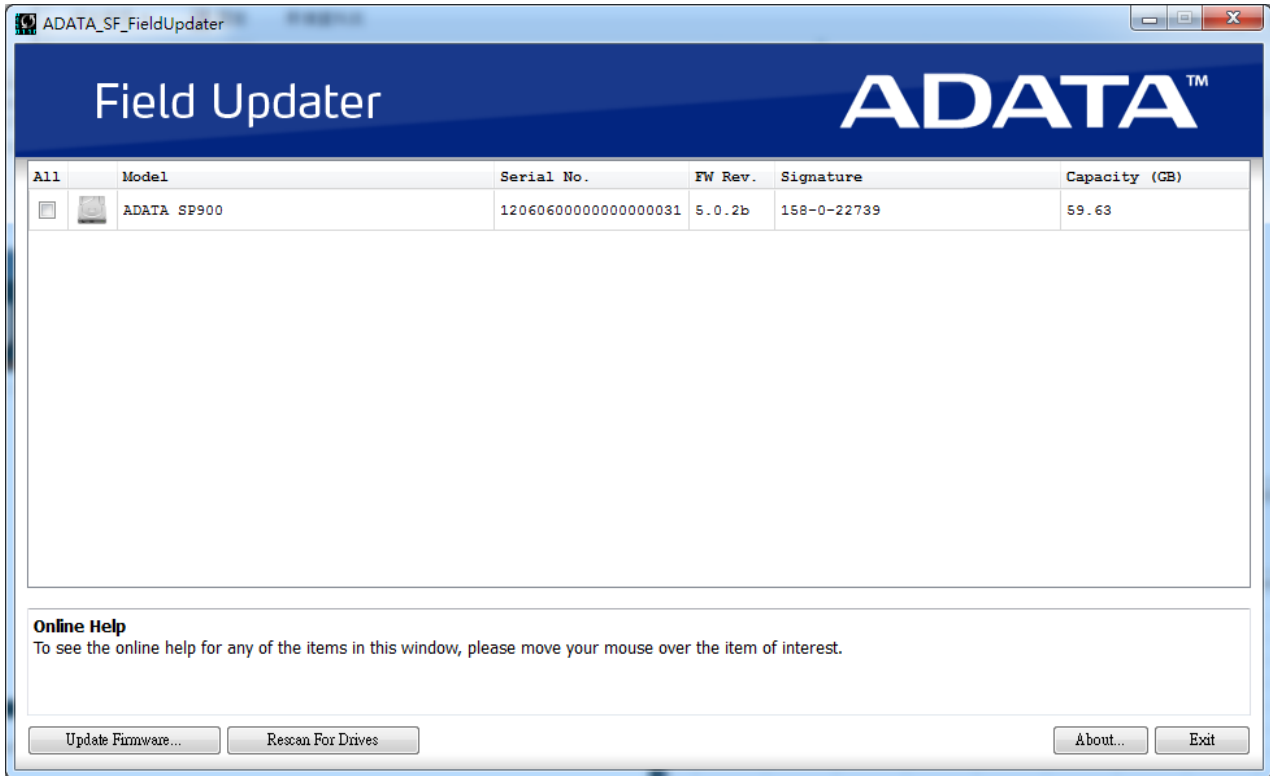


Plug in the SSD when devices are being detected, press "Rescan For Drives"





2. After “scanning for drives” is done, select the drive(s) to be updated. To update the firmware on more than one drive, check the corresponding boxes as shown below. The existing firmware config. file number will be shown under the “Signature” column.






ADATA\_SF\_FieldUpdater

# Field Updater

## ADATA™

All	Model	Serial No.	FW Rev.	Signature	Capacity (GB)
<input checked="" type="checkbox"/>	 ADATA SP900	1206060000000000031	5.0.2b	158-0-22739	59.63

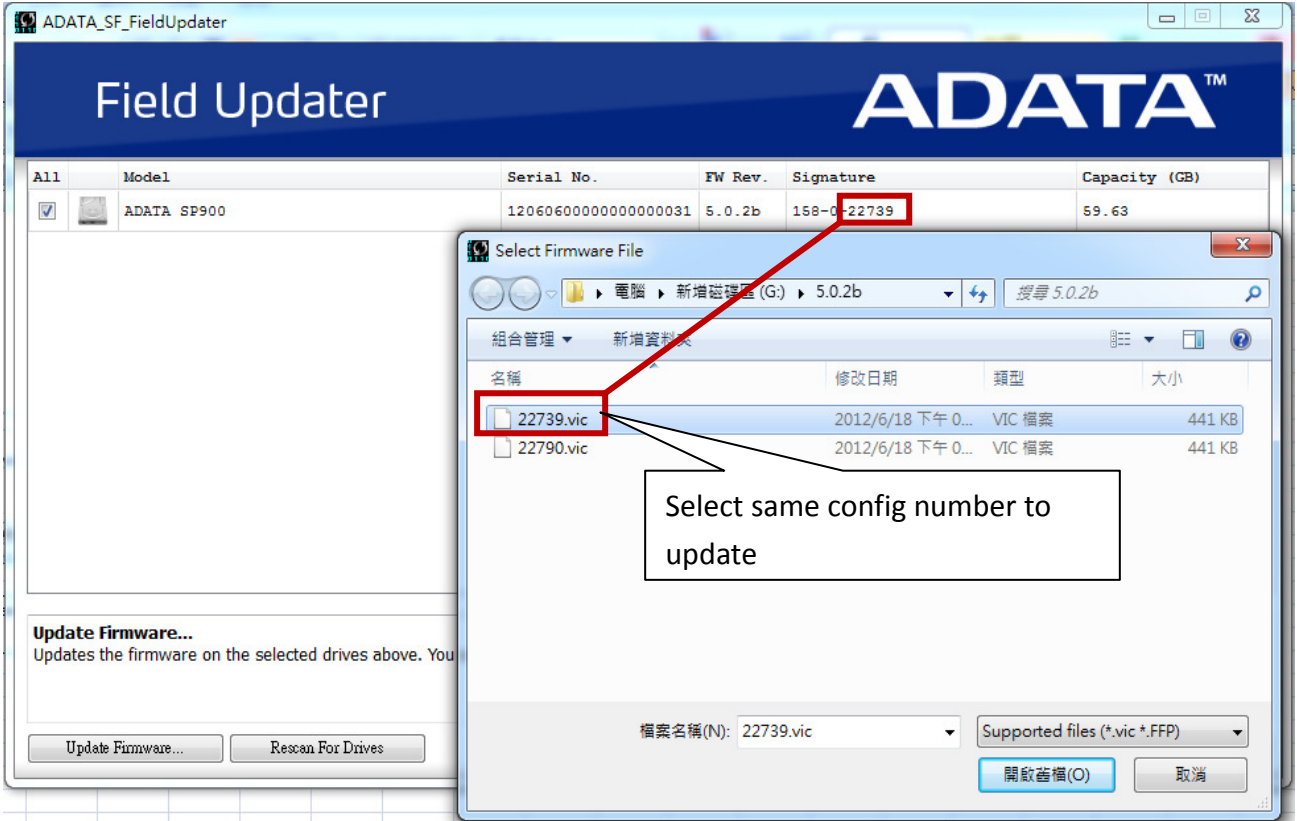
Click to select

**Detected Drives**  
List of supported drives detected on your system. Please put a check mark to the drives that you want update. Click on drive icon to see the output from the last operation.

Press update firmware



3. Click “Update Firmware” button and locate the config. file name (first five digits) that match the last five digits of the “Signature” number shown in previous screen.





4. Click on “Open” once the correct file is selected. A warning window will pop up, select “Proceed” and the firmware update will begin. Do not disconnect or interrupt the drive until update is complete!

ADATA\_SF\_FieldUpdater

## Field Updater

# ADATA™

All	Model	Serial No.	FW Rev.	Signature	Capacity (GB)
<input checked="" type="checkbox"/>	ADATA SP900	12060600000000000031	5.0.2b	158-0-22739	59.63

**Warning**

Automatic restart may occur after this operation. You should save all unsaved data before proceeding. If you wish to cancel the operation and save unsaved data now, click Cancel, otherwise click Proceed.

**Proceed** Cancel

**Detected Drives**  
List of supported drives detected on your system. Please put a check mark to the drives that you want update. Click on drive to see the output from the last operation.

Update Firmware... Rescan For Drives

Press “Proceed” to update firmware





5. When firmware update is done, press "Rescan For Drives " again. The firmware version will be changed to the latest version.

